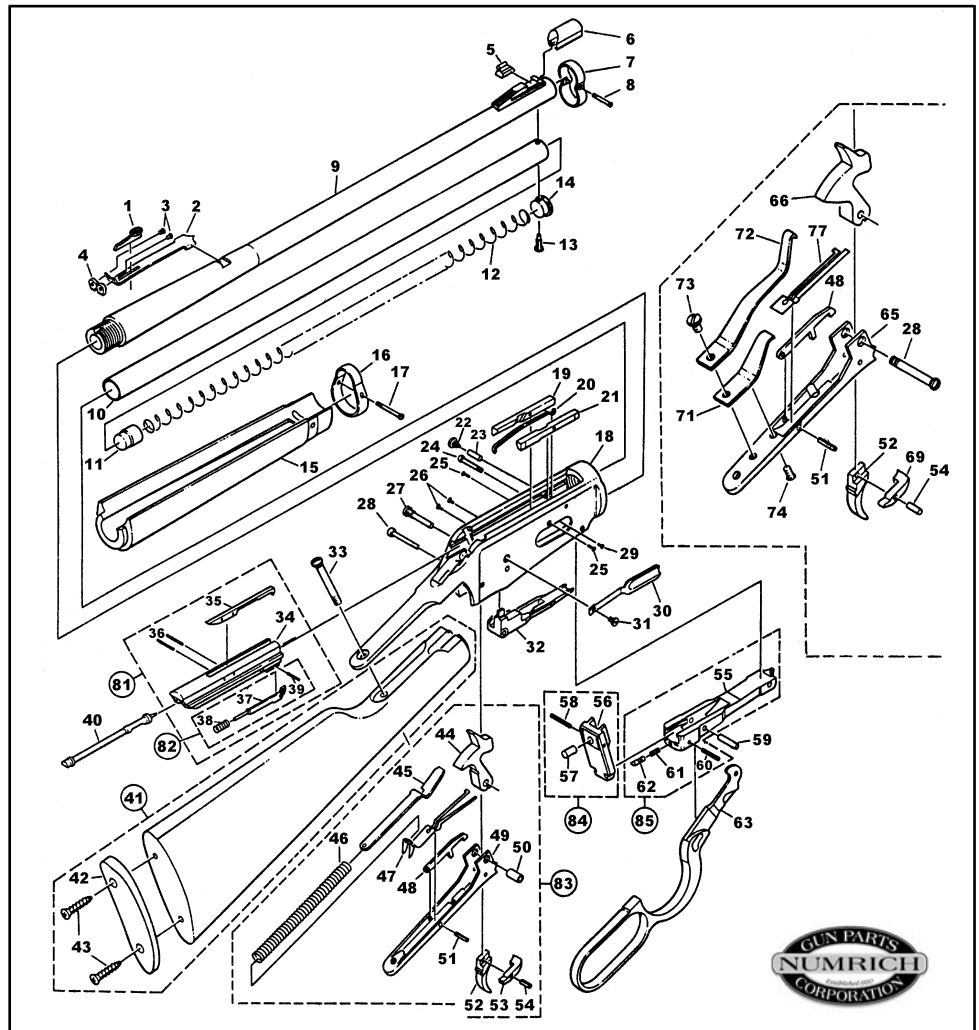


**NEW MODEL 94
TOP EJECT
LEVER ACTION
CARBINE & RIFLE
STANDARD - XTR
TRAPPER - WRANGLER
ANTIQUE - .44 MAGNUM
BIG BORE (375 WIN.)
64A RIFLE**

**MODEL 94
ANGLE EJECT
LEVER ACTION
STANDARD - XTR
BIG BORE
RANGER - TRAPPER
WRANGLER II
WIN TUFF - RIFLE
DELUXE - STANDARD
LIMITED EDITION
CENTENNIAL**

NOTE: PLEASE SPECIFY SERIAL NUMBER, MODEL, CALIBER, EJECTION TYPE & MFR. # WHEN ORDERING



NEW MODEL 94 TOP EJECT LEVER ACTION CARBINE & RIFLE

| KEY# | MFR# | ITEM# | DESCRIPTION | PRICE |
|------|-----------|--------|---|-------------------|
| 1 | 3C | 267790 | Rear Sight Elevator | \$8.90 |
| 2 | 94 | 267860 | Rear Sight Assembly | 17.85 |
| 3 | 94A | 267880 | Rear Sight Binding Screw (2 Req'd) | 2.70ea |
| 4 | 94B | 267910 | Rear Sight Blade | 6.35 |
| - | 103F | 268000 | Front Sight, 360 High | 11.65 |
| 6 | 3281 | 294550 | Sight Hood, Blue, Replacement | 3.05 |
| 7 | - | 268120 | Front Band | 16.20* |
| 7A | - | 268150 | Front Band (Uses #8A Screw) | 12.90 |
| 8 | - | 268170 | Front Band Screw, Non-Tapered | 2.40 |
| - | 18794X | 268210 | Front Band Screw, Tapered | 2.40 |
| 9 | - | - | Barrels | (SEE ACCESSORIES) |
| 10 | 24194XT | 268280 | Magazine Tube | 27.00 |
| 10 | 13394X | 273770 | Magazine Tube | 24.90 |
| 10 | 13194X | 273900 | Magazine Tube, .375 Win | 27.00 |
| 10 | 14194X | 273920 | Magazine Tube | 24.90 |
| - | 32094NRA | 273980 | Magazine Tube Bracket Pin, NI | 1.65* |
| 11 | 5794X | 262010 | Magazine Follower (Specify Caliber) | 7.15* |
| 12 | 11294X | 800100 | Magazine Spring, (Specify Caliber) | 4.40 |
| 13 | 11994X | 274330 | Magazine Plug Screw | 2.70 |
| 13 | 12094X | 274350 | Magazine Plug Screw, .375 Win | 2.45 |
| 14 | 11494X | 274390 | Magazine Plug, .375 Win | 5.15 |
| 14 | 11394X | 274420 | Magazine Plug | 10.25 |
| 14 | U34997090 | 949860 | Magazine Plug, Blue, Rounded w/ Slotted End | 10.25 |
| 15 | - | - | Forend | (SEE ACCESSORIES) |

| | TOP EJECT 64A RIFLE | TOP EJECT ANTIQUE | TOP EJECT BIG BORE | TOP EJECT STANDARD | TOP EJECT TRAPPER | TOP EJECT WRANGLER | TOP EJECT XTR |
|----|---------------------|-------------------|--------------------|--------------------|-------------------|--------------------|---------------|
| 1 | X | X | X | X | X | X | X |
| 2 | X | X | X | X | X | X | X |
| 3 | X | X | X | X | X | X | X |
| 4 | X | X | X | X | X | X | X |
| 6 | X | X | X | X | X | X | X |
| 7 | X | X | X | X | X | X | X |
| 7A | X | X | X | X | X | X | X |
| 8 | X | X | X | X | X | X | X |
| - | X | X | X | X | X | X | X |
| 9 | X | X | X | X | X | X | X |
| 10 | X | | | | | | |
| 10 | | X | | X | | | X |
| 10 | | | X | | | | |
| 10 | | | | | X | X | |
| - | X | | | | | X | X |
| 11 | X | X | X | X | X | X | X |
| 12 | X | X | X | X | X | X | X |
| 13 | X | X | | X | X | X | X |
| 13 | | | X | | | | |
| 14 | X | X | | X | X | X | X |
| 14 | X | X | | X | X | X | X |
| 15 | X | X | X | X | X | X | X |

NI = NOT ILLUSTRATED * = PART IS IN LIMITED QUANTITY. PLACE THE ITEM OR ITEMS ON ORDER, AND WE WILL SHIP THEM IF AVAILABLE.

NEW MODEL 94 TOP EJECT LEVER ACTION CARBINE & RIFLE

| KEY# | MFR# | ITEM# | DESCRIPTION | PRICE | TOP EJECT 64A RIFLE | TOP EJECT ANTIQUE | TOP EJECT BIG BORE | TOP EJECT STANDARD | TOP EJECT TRAPPER | TOP EJECT WRANGLER | TOP EJECT XTR |
|------|-----------|--------|--|---------|---------------------|-------------------|--------------------|--------------------|-------------------|--------------------|---------------|
| - | 31094NRA | 276830 | Forend Cap, NI | 23.35* | X | | | | | | |
| - | 31294NRA | 277020 | Forend Cap Screw (2 Req'd) | 1.65ea* | X | | | | | | |
| 16 | 15194X | 277250 | Rear Band, Carbine | 15.30 | | X | X | X | X | X | X |
| 17 | 15294X | 277430 | Rear Band Screw | 2.80 | | X | X | X | X | X | X |
| 19 | 22444 | 301100 | Cartridge Guide, .44 Mag, Left Hand | 8.95 | X | X | | X | X | X | X |
| 19 | 1794X | 301110 | Cartridge Guide, Left Hand | 7.20 | X | X | | X | X | X | X |
| 19 | 2694X | 301130 | Cartridge Guide, .375 Win, Left Hand | 4.30 | | | X | | | | |
| 20 | 1494X | 301160 | Carrier Spring | 9.65 | X | X | X | X | X | X | X |
| - | 22744 | 301180 | Cartridge Stop, .44 Mag, NI | 1.65 | X | X | | X | X | X | X |
| 21 | 1694X | 301190 | Cartridge Guide, Right Hand | 8.50 | X | X | | X | X | X | X |
| 21 | 22544 | 301220 | Cartridge Guide, .44 Mag, Right Hand | 6.80 | X | X | | X | X | X | X |
| 21 | 2794X | 301250 | Cartridge Guide, .375 Win, Right Hand | 4.30 | | | X | | | | |
| 22 | 2994X | 301260 | Finger Lever Pin Stop Screw | 2.80 | X | X | X | X | X | X | X |
| 23 | - | 301280 | Pin (Finger Lever) | 2.65 | X | X | X | X | X | X | X |
| 24 | 3494X | 301290 | Screw (Link) | 2.70 | X | X | X | X | X | X | X |
| 25 | 22644 | 301310 | Cartridge Guide Screw, .44 Mag (2 Req'd) | 2.45ea | X | X | | X | X | X | X |
| 25 | 1894X | 301330 | Cartridge Guide Screw (2 Req'd) | 2.45ea | X | X | X | X | X | X | X |
| 26 | 12970C | 260100 | Screw (Sight Plug, 2 Req'd) | 2.55ea | X | X | X | X | X | X | X |
| 27 | 1394X | 301350 | Carrier Screw | 2.40 | X | X | X | X | X | X | X |
| 28 | 3494X | 301290 | Screw (Hammer) | 2.70 | X | X | | X | X | X | X |
| 28 | 3594X | 301400 | Hammer Screw, .375 Win | 2.80 | | | X | | | | |
| 29 | 1594X | 301430 | Carrier Spring Screw | 2.70 | X | X | X | X | X | X | X |
| 30 | 23444 | 301440 | Spring Cover, .44 Mag | 14.05 | X | X | | X | X | X | X |
| 30 | 6994AX | 301450 | Spring Cover, Brass Plated | 18.50 | X | X | X | X | X | X | X |
| 30 | 6994X | 301460 | Spring Cover, Plain | 10.75 | X | X | X | X | X | X | X |
| 31 | 7094X | 301470 | Spring Cover Screw | 2.70 | X | X | X | X | X | X | X |
| 32 | 22344 | 301480 | Carrier, .44 Mag | 33.50 | X | X | | X | X | X | X |
| 33 | 16494X | 301490 | Tang Screw, Upper | 6.60 | X | | X | X | X | X | X |
| 34 | 294X | 301500 | Breech Bolt With Extractor And Pins | 55.15 | X | X | X | X | X | X | X |
| 34 | 0451A2820 | 949850 | Breech Bolt W/ Extractor, Blue (Short Ejector 1-1/4" Type) | 37.20 | X | X | X | X | X | X | X |
| 34 | - | 949840 | Breech Bolt W/ Extractor & 1-1/4" Ejector | 37.20 | X | X | X | X | X | X | X |
| 35 | 1994X | 301510 | Extractor | 21.00 | X | X | X | X | X | X | X |
| 36 | 33270 | 301520 | Extractor Pin (2 Req'd) | 2.40ea | X | X | X | X | X | X | X |
| 37 | 2194X | 301540 | Ejector | 15.30 | X | X | X | X | X | X | X |
| 37 | 22844 | 301550 | Ejector, .44 Mag | 15.20 | X | X | | X | X | X | X |
| 38 | 2394X | 301570 | Ejector Spring | 2.45 | X | X | X | X | X | X | X |
| 38 | 22944 | 301590 | Ejector Spring, .44 Mag, Inner | 2.70 | X | X | | X | X | X | X |
| 38 | 23044 | 301600 | Ejector Spring, .44 Mag, Outer | 2.45* | X | X | | X | X | X | X |
| 39 | 2494X | 301610 | Ejector Stop Pin | 2.40 | X | X | X | X | X | X | X |
| 40 | 2594X | 301620 | Firing Pin | 20.95 | X | X | X | X | X | X | X |
| 41 | - | - | (SEE ACCESSORIES) | | X | X | X | X | X | X | X |
| 42 | 30394NRA | 235880 | Buttplate | 13.95 | X | | | | | | |
| 42 | 694X | 301670 | Buttplate | 8.95 | | X | X | X | X | X | X |
| 43 | 33094NRA | 301700 | Buttplate Screw (2 Req'd) | 2.45ea | X | | | | | | |
| 43 | 9112 | 301710 | Screw (2 Req'd) (Buttplate) | 2.55ea | | X | X | X | X | X | X |
| 44 | 4294X | 301730 | Hammer (Above Serial Number 4,580,000) | 40.60* | X | X | X | X | X | X | X |
| 45 | 4794X | 301750 | Hammer Spring Guide Rod (Above Serial Number 4,580,000) | 4.30 | X | X | X | X | X | X | X |
| 46 | 4594X | 318080 | Hammer Spring (Above Serial Number 4,580,000) | 2.70 | X | X | X | X | X | X | X |
| 47 | 7494X | 301950 | Trigger Stop Spring (Above Serial Number 4,580,000) | 5.85 | X | X | X | X | X | X | X |
| 48 | 7594X | 301960 | Trigger Stop | 10.25 | X | X | X | X | X | X | X |
| 49 | 10494X | 301970 | Tang, Lower (Above Serial Number 4,580,000) | 36.05 | | X | X | X | X | X | X |
| 49 | 546 | 301990 | Tang, Lower | 50.10 | X | | | | | | |
| 50 | 4394X | 302020 | Hammer Bushing (Above Serial Number 4,580,000) | 1.65 | X | X | X | X | X | X | X |
| 51 | 33270 | 302030 | Trigger Stop Pin | 2.45 | X | X | X | X | X | X | X |
| 52 | 7794X | 302050 | Trigger | 18.10 | X | X | X | X | X | X | X |
| 53 | 7294X | 302060 | Sear (Above Serial Number 4,580,000) | 8.80 | X | X | X | X | X | X | X |
| 54 | 7794AX | 302090 | Trigger And Sear Pin | 2.40 | X | X | X | X | X | X | X |
| 55 | 23244 | 302120 | Link, .44 Mag | 40.60 | X | X | | X | X | X | X |
| 56 | 5294X | 302150 | Locking Bolt, .375 Win | 25.10 | | | X | | | | |
| 56 | 5094X | 302160 | Locking Bolt | 31.15 | X | X | X | X | X | X | X |
| 57 | 4094X | 302170 | Firing Pin Striker | 7.40 | X | X | X | X | X | X | X |
| 58 | 4194X | 302220 | Pin (Firing Pin Striker Stop) | 1.65 | X | X | X | X | X | X | X |
| 59 | 2994AX | 302240 | Finger Lever Link Pin | 2.60 | X | X | X | X | X | X | X |
| 60 | 3994X | 302290 | Friction Stud Stop Pin, Hollow Type | 2.15 | X | X | X | X | X | X | X |
| 60 | 6394X | 302310 | Friction Stud Stop Pin, Shank Type | 2.15 | X | X | X | X | X | X | X |
| 61 | 3894X | 302320 | Friction Stud Spring, Hollow Type | 1.65 | X | X | X | X | X | X | X |
| 61 | 6094X | 302340 | Friction Stud Spring, Shank Type | 1.65 | X | X | X | X | X | X | X |
| 62 | 3794X | 302360 | Friction Stud, Hollow Type | 5.10 | X | X | X | X | X | X | X |
| 62 | 6194X | 302380 | Friction Stud, Shank Type | 8.50 | X | X | X | X | X | X | X |
| 63 | 16994X | 302400 | Finger Lever | 46.95 | | X | X | X | X | X | X |
| 63 | 23144 | 302410 | Finger Lever, .44 Mag | 46.95 | | X | | X | X | X | X |
| 63 | 346 | 302470 | Finger Lever, Model 64A | 41.85 | X | | | | | | |

NI = NOT ILLUSTRATED * = PART IS IN LIMITED QUANTITY. PLACE THE ITEM OR ITEMS ON ORDER, AND WE WILL SHIP THEM IF AVAILABLE.

NEW MODEL 94 TOP EJECT LEVER ACTION CARBINE & RIFLE

| KEY# | MFR# | ITEM# | DESCRIPTION | PRICE |
|------|-----------|--------|---|--------|
| 63 | 11094X | 302500 | Bow Finger Lever, Large | 56.25* |
| 65 | 10394X | 302550 | Tang, Lower (Between Serial Numbers 2,700,000 & 4,580,000) | 40.75 |
| 66 | 4494X | 302590 | Hammer (Between Serial Numbers 2,700,000 & 4,580,000) | 31.30* |
| 69 | 7194X | 302620 | Sear (Between Serial Numbers 2,700,000 & 4,580,000) | 10.25* |
| 71 | 10694AX | 302640 | Mainspring Base (Between 2,700,000 & 4,580,000) | 9.45 |
| 72 | 10694X | 302670 | Mainspring (Between 2,700,000 & 4,580,000) | 13.15 |
| 73 | 5594X | 302690 | Mainspring Screw (Between 2,700,000 & 4,580,000) | 2.40 |
| 74 | 5694X | 302710 | Mainspring Strain Screw (Between 2,700,000 & 4,580,000) | 2.70 |
| 77 | 7394X | 302730 | Trigger Stop Spring (Between 2,700,000 & 4,580,000) | 5.95 |
| 81 | 894X | 303010 | Breech Bolt, Complete | 73.30 |
| 81 | 22244 | 302780 | Breech Bolt, .44 Mag, Complete | 70.05 |
| 81 | 1094X | 302840 | Breech Bolt, .375 Win, Complete | 77.10 |
| 82 | 2294X | 302880 | Ejector, Standard, Complete | 21.30 |
| 83 | 646 | 303050 | Tang, Lower, Complete (Between Serial Numbers 2,700,000 & 4,580,000) | 112.45 |
| 83 | 10594X | 303070 | Tang, Lower, Complete (Above Serial Number 4,580,000) | 120.05 |
| 83 | 10794X | 303100 | Tang, Lower, Complete (Between 2,700,000 & 4,580,000) | 105.25 |
| 84 | 5394X | 303120 | Locking Bolt, .375 Win, Complete | 32.45 |
| 84 | 5194X | 303140 | Locking Bolt, Complete | 40.65 |
| 85 | 4994X | 303180 | Link, Complete | 37.30 |
| - | 16594AX | 303260 | Saddle Ring Assembly, NI | 29.40 |
| - | 13966 | 303320 | Saddle Ring Assembly, NI | 24.15 |
| - | 17594X | 303210 | Saddle Ring Plug Screw, NI | 1.65 |
| - | - | 538010 | Swivel W/O Bases, 1" Quick Detachable, Pair | 10.90 |
| - | - | 538020 | Swivel, 1-1/4" Quick Detachable, Pair | 10.90 |
| - | 27717 | 261220 | Stock Swivel Stud | 11.40 |
| - | 0450A1180 | 317790 | Breech Bolt, .307 Cal., .356 Cal. (Short Ejector Type) | 42.65 |
| - | 0451A3020 | 318480 | Breech Bolt, .307 Cal., .356 Cal., Complete | 73.30 |

| TOP EJECT 64A RIFLE | TOP EJECT ANTIQUÉ | TOP EJECT BIG BORE | TOP EJECT STANDARD | TOP EJECT TRAPPER | TOP EJECT WRAN- GLER | TOP EJECT XTR |
|------------------------|----------------------|-----------------------|-----------------------|----------------------|----------------------------|------------------|
| | | | | | X | |
| X | X | X | X | X | X | X |
| X | X | X | X | X | X | X |
| X | X | X | X | X | X | X |
| X | X | X | X | X | X | X |
| X | X | X | X | X | X | X |
| X | X | X | X | X | X | X |
| X | X | X | X | X | X | X |
| X | X | X | X | X | X | X |
| X | X | X | X | X | X | X |
| X | X | X | X | X | X | X |
| X | X | X | X | X | X | X |
| X | X | X | X | X | X | X |
| X | X | X | X | X | X | X |
| X | X | X | X | X | X | X |
| X | X | X | X | X | X | X |
| X | X | X | X | X | X | X |

MODEL 94 ANGLE EJECT
(AND MODELS WITH S/N ABOVE 6,000,000 INCLUDING AE PREFIX S/N) LEVER ACTION

| KEY# | MFR# | ITEM# | DESCRIPTION | PRICE |
|------|-----------|--------|--|---------|
| - | 94120020 | 317750 | Breech Bolt | \$37.20 |
| - | 0450A1130 | 317770 | Breech Bolt (Short Ejector Type) | 37.20 |
| - | 0450A1140 | 318960 | Breech Bolt, .357 Mag (Above Serial Number 6,000,000) | 37.20 |
| - | 0451A3030 | 319020 | Breech Bolt, .357 Mag, Complete (Above Serial Number 6,000,000) | 73.30 |
| - | 94400025 | 318340 | Breech Bolt, .44 Rem, .45 Colt, Complete | 76.50* |
| - | 0451A3010 | 318440 | Breech Bolt, .44 Rem, .45 Colt, Complete (For 1 1/4" Short Ejector) | 73.30 |
| - | 94120025 | 318320 | Breech Bolt, Complete | 79.25 |
| - | 0451A3000 | 318370 | Breech Bolt, Complete (For 1 1/4" Short Ejector) | 73.30 |
| - | 94070035 | 317710 | Carrier | 38.15 |
| - | 6430A2050 | 318850 | Carrier Spring Cover, .357 Mag (Above Serial Number 6,000,000) | 4.70 |
| - | 1450A0200 | 318950 | Carrier, .357 Mag (Above Serial Number 6,000,000) | 32.50 |
| - | 9440035 | 317690 | Carrier, .44 Rem, .45 Colt | 33.00 |
| - | 4910A2210 | 318830 | Cartridge Block Screw, .357 Mag (Above Serial Number 6,000,000) | 2.40 |
| - | 6410A0070 | 318840 | Cartridge Block, .357 Mag (Above Serial Number 6,000,000) | 3.60 |
| - | 94400047 | 317560 | Cartridge Guide Screw, .44 Rem, .45 Colt (2 Req'd) | 2.70ea |
| - | 94070045 | 317510 | Cartridge Guide, .307 Cal., .356 Cal., Right Hand | 18.00 |
| - | 2000A0260 | 318890 | Cartridge Guide, .357 Mag, Left Hand (Above Serial Number 6,000,000) | 15.25 |
| - | 2000A0270 | 318900 | Cartridge Guide, .357 Mag, Right Hand (Above Serial Number 6,000,000) | 10.15 |
| - | 94400040 | 314470 | Cartridge Guide, .44 Rem, Left Hand | 7.60 |
| - | 9400045 | 317450 | Cartridge Guide, .44 Rem, Right Hand | 8.00 |
| - | 94450040 | 314520 | Cartridge Guide, .45 Colt, Left Hand | 8.85* |
| - | 94450045 | 317490 | Cartridge Guide, .45 Colt, Right Hand | 8.85* |
| - | 94070040 | 317350 | Cartridge Guide, .307 Cal., .356 Cal., Left Hand | 18.00 |
| - | 1850A0280 | 949830 | Ejector, Short, 1-1/4" | 5.00* |
| - | 1850A0270 | 318970 | Ejector, .357 Mag (Above Serial Number 6,000,000) | 8.50* |
| - | 7771A1020 | 319030 | Ejector, .357 Mag, Complete (Above Serial Number 6,000,000) | 10.35 |
| - | 7771A1019 | 330130 | Ejector, Short, .44 Rem, .45 Colt, 1 1/4", Complete | 10.35 |
| - | 1850A0250 | 317900 | Ejector, Short, .44 Rem, .45 Colt, 1 1/4" | 7.15 |
| - | 7771A1018 | 318570 | Ejector, Short, 1 1/4", Complete | 20.80* |
| - | 1850A0240 | 317890 | Ejector, Short, 1 1/4" | 5.00 |
| - | 94400050 | 317870 | Ejector, Long, .44 Rem, .45 Colt, 2 1/8" | 4.75* |
| - | 94070050 | 317850 | Ejector, Long, 2 1/8" | 14.55 |

| ANGLE EJECT BIG BORE | ANGLE EJECT DELXE | ANGLE EJECT LTD ED | ANGLE EJECT RNGER | ANGLE EJECT RIFLE | ANGLE EJECT STAN- DARD | ANGLE EJECT TRAP- PER | ANGLE EJECT WIN TUFF | ANGLE EJECT WRAN- GLER | ANGLE EJECT XTR |
|-------------------------------|-------------------------|--------------------------|-------------------------|-------------------------|---------------------------------|--------------------------------|-------------------------------|---------------------------------|-----------------------|
| X | X | | X | | X | X | X | X | |
| | X | | | | | | | | |
| X | | X | X | | X | X | X | X | |
| X | | X | X | | X | X | X | X | |
| X | X | | X | | X | X | X | X | |
| X | | X | X | | X | X | X | X | |
| X | | X | X | | X | X | X | X | |
| X | | X | X | | X | X | X | X | |
| X | X | X | X | X | X | X | X | X | X |
| X | X | X | X | X | X | X | X | X | X |
| X | X | X | X | X | X | X | X | X | X |
| X | X | X | X | X | X | X | X | X | X |
| X | X | X | X | X | X | X | X | X | X |
| X | X | X | X | X | X | X | X | X | X |
| X | X | X | X | X | X | X | X | X | X |
| X | X | X | X | X | X | X | X | X | X |
| X | X | X | X | X | X | X | X | X | X |
| X | X | X | X | X | X | X | X | X | X |
| X | X | X | X | X | X | X | X | X | X |
| X | X | X | X | X | X | X | X | X | X |
| X | X | X | X | X | X | X | X | X | X |

NI = NOT ILLUSTRATED * = PART IS IN LIMITED QUANTITY. PLACE THE ITEM OR ITEMS ON ORDER, AND WE WILL SHIP THEM IF AVAILABLE.

MODEL 94 ANGLE EJECT (ABOVE 6,000,000) LEVER ACTION

| KEY# | MFR# | ITEM# | DESCRIPTION | PRICE | ANGLE EJECT BIG BORE | ANGLE EJECT DELXE | ANGLE EJECT LTD ED | ANGLE EJECT RINGER | ANGLE EJECT RIFLE | ANGLE EJECT STAND-DARD | ANGLE EJECT TRAP-PER | ANGLE EJECT WIN TUFF | ANGLE EJECT WRAN-GLER | ANGLE EJECT XTR |
|------|------------|--------|--|----------|----------------------|-------------------|--------------------|--------------------|-------------------|------------------------|----------------------|----------------------|-----------------------|-----------------|
| - | 94400051 | 318530 | Ejector, Long, .44 Rem, .45 Colt, 2 1/8", Complete | 18.90 | | X | | X | | X | X | X | X | |
| - | 94070051 | 318520 | Ejector, Long, 2 1/8", Complete | 20.80 | X | X | | X | | X | X | X | X | |
| - | 90994WCC | 317970 | Ejector Spring, .44 Rem, .45 Colt | 2.65 | | X | | X | | X | X | X | X | |
| - | 94070055 | 317990 | Ejector Stop Pin | 2.45 | X | X | | X | | X | X | X | X | |
| - | 94070060 | 318000 | Extractor | 17.80 | X | X | | X | | X | X | X | X | |
| - | 94070065 | 318010 | Extractor Retaining Screw (2 Req'd) | 2.70ea | X | X | | X | | X | X | X | X | |
| - | 2050A0560 | 319010 | Finger Lever, .357 Mag (Above Serial Number 6,000,000) | 36.20* | X | | X | X | | X | X | X | X | X |
| - | U342300280 | 943140 | Firing Pin | 14.65* | X | X | X | X | | X | X | X | X | |
| - | 94070275 | 304310 | Front Band | 12.50 | X | | | | | X | | | | |
| - | 94070130 | 304300 | Front Sight Cover | 8.00 | X | | | | | | | | | |
| - | 94120130 | 304290 | Front Sight Cover (For Use With Removable Ramp) | 9.00 | X | X | | X | | X | X | X | X | X |
| - | 4910A2070 | 304270 | Front Sight Ramp Screw (For Use With Removable Ramp) | 2.80 | X | X | | X | | X | X | X | X | X |
| - | 94120140 | 304130 | Front Sight Ramp, Removable | 15.75 | | X | | X | | X | X | X | X | X |
| - | 94070132 | 304150 | Front Sight Ramp, Removable | 19.45* | X | | | | | | | | | |
| - | 83494BP | 304240 | Front Sight, .445" High (Trapper BB) | 12.50 | | | | | | X | | | | |
| - | 5301A0290 | 318860 | Front Sight, Rifle, .450" High (Above Serial Number 6,000,000) | 13.45 | X | | X | X | X | X | X | X | X | |
| - | 94300140 | 304180 | Front Sight, .575" High | 12.50 | | | | X | | | | | | |
| - | 94120740 | 304190 | Front Sight, .575" High | 14.50 | | X | | | | | | | | |
| - | 38094TX | 304210 | Front Sight, .580" High | 12.50 | | | | X | | | | | | |
| - | 40794XW | 318030 | Hammer, .307 Cal., .356 Cal., .375 Win (Serial Number AE10001-AE19000) | 37.55 | X | | | | | | | | | |
| - | 94120425 | 318980 | Hammer, Standard, Drilled (Above Serial Number 6,000,000) | 31.30 | X | | X | X | | X | X | X | X | |
| - | 94070284 | 317630 | Hammer Screw | 2.45 | X | | | | | X | X | X | X | |
| - | 94120450 | 318080 | Hammer Spring | 2.70 | X | X | | X | | X | X | X | X | |
| - | 94120470 | 318060 | Hammer Spring Guide Rod | 7.20 | X | X | | X | | X | X | X | X | |
| - | 94120475 | 318810 | Hammer Spur Extension (For Drilled Hammer) | 5.50 | X | X | | X | | X | X | X | X | |
| - | 2900A210 | 949820 | Hammer, Standard (Not Drilled) | 31.30 | | X | | X | X | X | X | X | X | X |
| - | 2910A0050 | 318930 | Hammer Stop (Above Serial Number 6,000,000) | 7.40 | X | | X | X | | X | X | X | X | |
| - | 4130A1060 | 318910 | Hammer Stop Plunger (Above Serial Number 6,000,000) | 3.95 | X | | X | X | | X | X | X | X | |
| - | 64000A1620 | 318920 | Hammer Stop Plunger Spring (Above Serial Number 6,000,000) | 2.70 | X | | X | X | | X | X | X | X | |
| - | 94070289 | 318190 | Link, .44 Rem, .45 Colt (Above Serial Number 5,550,001) | 33.55* | X | X | | X | | X | X | X | X | |
| - | 94070285 | 318230 | Link, Complete | 37.60 | X | | | | | | | | | |
| - | 94120481 | 318720 | Link, Complete (Above Serial Number 5,550,001) | 41.40 | | X | | X | | X | X | X | X | |
| - | 94070290 | 318740 | Link, Complete (Above Serial Number 5,550,001) | 37.60 | X | | | | | | | | | |
| - | 94120480 | 318150 | Link (Above Serial Number 5,550,001) | 33.30 | | X | | X | | X | X | X | X | |
| - | 94120486 | 318280 | Link Pin Stop Screw (Above Serial Number 5,550,001) | 2.45 | X | X | | X | | X | X | X | X | |
| - | 94070090 | 318250 | Locking Bolt | 22.10 | X | | | | | | | | | |
| - | 94070091 | 318700 | Locking Bolt, Complete | 32.45 | X | | | | | | | | | |
| - | 61394LH | 311880 | Magazine Bracket Pin | 1.65* | | | | X | | | | | | |
| - | 3600A0870 | 318870 | Magazine Follower, .357 Mag (Above Serial Number 6,000,000) | 4.80 | X | | X | X | | X | X | X | X | |
| - | U342300280 | 949860 | Magazine Plug, Blue, Rounded w/ Slotted End | 10.25 | | X | | X | X | X | X | X | X | X |
| - | 94070291 | 274390 | Magazine Plug, .375 Win | 5.15 | X | | | | | | | | | |
| - | 94070292 | 311920 | Magazine Plug Screw | 2.45 | X | | | | | | | | | |
| - | 6400A1770 | 800100 | Magazine Spring (Specify Caliber) | 4.40 | X | X | | X | X | X | X | X | X | X |
| - | 60794LF | 311700 | Magazine Tube | 29.30* | | | | X | | | | | | |
| - | 94300200 | 311710 | Magazine Tube | 25.90 | | | | X | | | | | | |
| - | 94070293 | 311730 | Magazine Tube | 24.90 | X | | | | | | | | | |
| - | 94120200 | 311750 | Magazine Tube (Dovetailed Front Sight Version) | 27.00* | | X | | X | | X | X | X | X | |
| - | 94070296 | 311840 | Magazine Tube (Dovetailed Front Sight Version) | 27.00 | X | | | | | | | | | |
| - | 94070295 | 311950 | Rear Band (Trapper BB) | 16.50 | X | | | | | X | | | | |
| - | 32G | 304110 | Rear Sight | 9.65 | | | | X | | | | | | |
| - | 4002 | 154990 | Rear Sight, Folding Leaf | 15.70 | X | | | | | | | | | |
| - | 63894JW | 304120 | Rear Sight Assembly | 9.40 | | | | X | | | | | | |
| - | 5C | 267790 | Rear Sight Elevator | 2.60 | | | | X | | | | | | |
| - | 63694JW | 304090 | Rear Sight Elevator | 7.45 | | | | X | | | | | | |
| - | 94070106 | 318770 | Scope Mount Base, Front (Holes Drilled In Line) | 20.70 | X | X | | X | | X | X | X | X | |
| - | 94070105 | 318750 | Scope Mount Base, Front (Holes Drilled Radially) | 20.70 | X | X | | X | | X | X | X | X | |
| - | 94070110 | 318760 | Scope Mount Base, Rear | 20.70 | X | X | | X | | X | X | X | X | |
| - | 94070115 | 318790 | Scope Mount Base Screw, Front (2 Req'd) | 2.15ea | X | X | | X | | X | X | X | X | |
| - | 35817 | 318780 | Scope Mount Base Screw, Rear (2 Req'd) | 2.15ea | X | X | | X | | X | X | X | X | |
| - | 94070125 | 318800 | Scope Rings, Detachable, 1", Pack Of 2 | 33.65/pr | X | X | | X | | X | X | X | X | |
| - | 94120720 | 319000 | Sear - Factory Only (Above Serial Number 6,000,000) | 11.20* | X | | X | X | | X | X | X | X | |
| - | 94070135 | 317640 | Spring Cover | 12.40 | X | | | | | | | | | |
| - | 9990A5470 | 318940 | Spring Cover, .357 Mag (Above Serial Number 6,000,000) | 12.40 | X | | X | X | | X | X | X | X | |
| - | 94400135 | 317660 | Spring Cover, .44 Rem, .45 Colt | 12.40 | | X | | X | | X | X | X | X | |
| - | 94070140 | 318820 | Swivel Clamp Assembly, Front | 18.00 | X | | | | | | | | | |
| - | 94121045 | 318670 | Tang, Lower, Standard, Complete (For Drilled Hammer) | 93.00 | X | X | | X | | X | X | X | X | |
| - | 6551A0280 | 318990 | Trigger And Hammer Block Assembly (Above Serial Number 6,000,000) | 18.10 | X | | X | X | | X | X | X | X | |
| - | 94120773 | 318120 | Trigger Spring | 2.45 | X | X | | X | X | X | X | X | X | X |
| - | 94120770 | 318090 | Trigger With Hammer Block Assembly | 17.55 | X | X | | X | | X | X | X | X | |

NI = NOT ILLUSTRATED * = PART IS IN LIMITED QUANTITY. PLACE THE ITEM OR ITEMS ON ORDER, AND WE WILL SHIP THEM IF AVAILABLE.

WINCHESTER MODEL 94 ACCESSORIES



ORIGINAL WINCHESTER COMMEMORATIVE BUTTSTOCKS AND FORENDS FOR POST 64 MODEL 94 RIFLES

Factory walnut stocks & forends.

GOLDEN SPIKE MODEL - Plain walnut, buttstock features straight grip with gold-finished checkered steel rifle buttplate and medallion cut.ITEM#319100 **\$61.15**
TEDDY ROOSEVELT MODEL - Model plain walnut buttstock features semi-pistol grip with curved nickel-finished steel buttplate and medallion cut.ITEM#319130 **\$50.65**

MODEL 66 - 7" plain walnut carbine forend for the Centennial octagon barrel. Uses the commemorative style forend cap, not included.ITEM#319140 **\$28.10**
NRA CENTENNIAL - Model plain walnut buttstock features semi pistol grip with medallion cut and black hard rubber Winchester logo buttplate.ITEM#319180 **\$56.00**

SEARS MODEL 54 - 30/30 CALIBER BARREL AND MAGAZINE TUBE SET - FITS WINCHESTER POST 64 MODEL 94



Convert your Winchester 94 rifle into a carbine, or replace your worn carbine barrel and magazine tube. Set includes a fully-finished 20" blued-steel barrel manufactured by Winchester, for Sears, Roebuck and Co., dovetail brass bead front sight, stamped semi-buckhorn rear leaf sight with elevator and an 18-5/8" long blued-steel replacement magazine tube. Use your existing bands, caps, forend and magazine tube parts. ITEM#701660 **\$43.25/set**



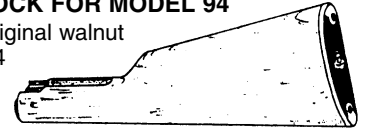
BUTTPLATES FOR POST WORLD WAR II WINCHESTER MODEL 94

Steel replacements for Model 94 Saddle Ring Carbine lever action rifles.

BluedITEM#265080 **\$14.10**
 In the White ITEM#265160 **\$10.45**

WINCHESTER FACTORY -SECOND BUTTSTOCK FOR MODEL 94

Factory original walnut for Post 64 Model 94 rifles.



Includes Winchester logo buttplate. Fully inletted and final shaped. May have knot holes, minor chips, scratches or stains. Will also fit Model 94 (pre 64), 92, 53 and Sears 54.

ITEM#298120 **\$16.85**

WINCHESTER 94 COMMEMORATIVE RIFLE PARTS

These factory nickel or gold plated parts will enhance model 94 Post-64 lever action rifles. Choose from the following list.

- Finger Lever, Nickel PlatedITEM#810970 **\$36.70**
- Finger Lever, Gold PlatedITEM#810980 **\$36.70**
- Link, Nickel Plated, Serial # Above 2,700,000, Friction Stud not IncludedITEM#810990 **\$20.95**
- Link, Gold Plated, Serial # Above 2,700,000, Friction Stud not IncludedITEM#811000 **\$20.95**
- Lower Tang, Nickel Plated, Serial # Above 4,580,000ITEM#811010 **\$20.95**
- Lower Tang, Gold Plated, Serial # Above 4,580,000ITEM#811020 **\$20.95**
- Magazine Plug, Nickel Plated, Screw not IncludedITEM#811030 **\$9.40**
- Magazine Plug, Gold Plated, Screw not IncludedITEM#811040 **\$9.40**

ORIGINAL WINCHESTER BUTTSTOCKS FOR MODEL 94

Straight-grip walnut stocks to fit Post 64 Model 94 Carbine rifles.

Plain with hard rubber buttplate. ITEM#587630 **\$39.35**

Deluxe cut-checkered with medallion cut-out. Includes blued-steel crescent buttplate. Some shop-wear. Medallion not included.

ITEM#319270 **\$51.15**
 Cut checkered with non-slip rifle buttplate. ITEM#319290 **\$50.60**

WINCHESTER COMMEMORATIVE STOCK MEDALLION

Factory original 2-1/2" pewter-finished medallion with raised Winchester logo. Fits commemorative stocks except the #1 Golden Spike. ITEM#296640 **\$7.05**



WINCHESTER COMMEMORATIVE SADDLE RING CARBINE BUTTPLATE

Factory original. Bright gold finish.



ITEM#294820 **\$16.35**

WINCHESTER 1892 / 1894 FOREND TIPS



Blued-steel replacements. Choose from round or octagon in the following calibers: .30-30, .38-40, .38-55 and .44-40.

Round Barrel Forend Tip
 ITEM # 882920 **\$20.95**

Octagon Barrel Forend Tip
 ITEM # 882930 **\$20.95**

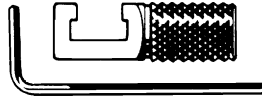
WINCHESTER 1894 COWBOY RIFLEMAN LEVER



Blued-steel. Fits straight grip Pre-64 and Post-64 models.

ITEM#319490 **\$56.25**

WINCHESTER 94 HAMMER EXTENSION



Knurled blued-steel surface. Slips over original hammer. Includes Allen wrench. Manufactured by Uncle Mike's.

ITEM#281930 **\$9.90**

WINCHESTER MAGAZINE BAND

Winchester manufacture steel bands for Post 64 Model 94 Winchester lever action rifles. .655" inner diameter, .610" long x .5" wide base. In the white. ITEM#283830 **\$4.30**



SIGHT HOODS FOR WINCHESTER RIFLES UP TO 75% OFF!

New blued-finish spring steel replacement hoods at prices up to 75% off Winchester factory list prices. Winchester 94 Series. ITEM#294550 **\$3.05ea or 10+/\$2.25ea or 100+/\$1.75ea**



WINCHESTER 94 "ONE HOLE" APERTURE REAR SIGHT

Eliminates eye strain and provides the precision to hit targets faster and farther than a standard rear sight. CNC machined with a 9/64" aperture and black phosphate finish. Attaches directly to the factory rear sight leaf with no modifications. Fits Winchester models 92, 94, 94AE, 9422 and 9410. Instructions and attaching screws are included.



ITEM#880560 **\$32.50**

WINCHESTER MODEL 94 ACCESSORIES

WINCHESTER 94 POST-64 & 94 AE FACTORY RIFLE BARRELS

Round, blued-steel, fully finished. All include a dovetail cut for rear sight and either a dovetail cut, single screw or ramp for the front sight. Sights are not included unless otherwise specified.

MODEL 94 TOP EJECT

20" - .32 Win. Special - Ramp FrontITEM#705030 **\$41.95**
 18" - 30-30 Win. - Wrangler - Sights Included . .ITEM#705040 **\$41.95**
 20" - .375 Win. - Big Bore XTR - Ramp Front . .ITEM#705050 **\$41.95**

MODEL 94AE ANGLE EJECT

16" - 30-30 Win. - .615" OD Muzzle - D.T. Front .ITEM#705060 **\$41.95**
 16" - 30-30 Win. - .615" OD Muzzle - D.T. Front .ITEM#701750 **\$41.95**
 20" - 30-30 Cal. - Single Screw FrontITEM#701760 **\$41.95**
 24" - .30-30 Win. - D.T. Front w/Full Magazine
 Tube, Ring and PinITEM#705980 **\$47.20**

20" - .307 Win. - Ramp FrontITEM#705070 **\$47.20**
 20" - .307 Win. - XTR - Ramp FrontITEM#705080 **\$47.20**
 20" - .356 Win. - D.T. FrontITEM#705090 **\$47.20**
 20" - .356 Win. - XTR - Ramp FrontITEM#705100 **\$47.20**
 20" - .375 Win. - Ramp FrontITEM#705110 **\$47.20**
 20" - .375 Win. - XTR - Ramp FrontITEM#705120 **\$47.20**
 20" - 7-30 Waters-Single Screw FrontITEM#705130 **\$47.20**
 20" - .44 Magnum - Ranger - Ramp FrontITEM#705140 **\$47.20**

WINCHESTER 94-22 LAMINATED STOCKS & FORENDS

Take advantage of the discounted pricing on Winchester 94-22 lever action rifle wood. These new, factory original stocks and forends feature durable, laminated construction and are perfect for replacement or upgrade purposes. All stocks include a black plastic Winchester logo buttplate. Choose from the following styles and colors. Quantities are limited!

STOCKS

Brown Laminated Stock, PlainITEM # 886030 **\$34.15**
 Green Laminated Stock, PlainITEM # 886040 **\$34.15**
 Gray/Black Laminated Stock, Checkered . . .ITEM # 886050 **\$36.25**

FORENDS

Brown Laminated Forend, PlainITEM # 886060 **\$20.95**

Brown Laminated Forend, CheckeredITEM # 886070 **\$24.10**
 Green Laminated Forend, PlainITEM # 886080 **\$20.95**

ALSO AVAILABLE

Walnut Forend, High Gloss, Checkered . . .ITEM # 886090 **\$26.25**

WINCHESTER 94 POST-64 DELUXE WALNUT SADDLE RING FOREND

This new, factory original forend features deluxe, fleur-de-lis checkering and a satin finish. The saddle ring forend measures 9 1/4" long and fits the standard caliber Winchester 94 Post-64 Angle Eject Deluxe rifle.

ITEM # 886310 **\$25.75**

WINCHESTER 94AE FACTORY .444 MARLIN BARREL

Round 20" blued-steel barrel includes a 3/8" dovetail cut for the rear sight. Tapped for a single screw ramp front sight (sights not included).

ITEM # 850880 **\$52.45**

WINCHESTER 1894 .30 W.C.F. HALF OCTAGON BARREL KIT

Give your Winchester 94 lever action rifle the look and feel of over a century ago. Our quality crafted kit features a 26" half round/half octagon blued-steel barrel, stained walnut forend, forend tip and screws, full-buckhorn rear sight assembly, Lyman style front sight and a 12-1/2" magazine tube, pin and spring. Fully-finished and ready to install. Fits Pre and Post-64 models. Note: Spring requires fitting. Use your existing magazine plug, screw and follower. Angle Eject models will require additional off-set extractor cut.

ITEM # 715730 **\$279.95**

WINCHESTER 1894 .38-55 LONG RANGE COWBOY ACTION BARREL

Non-tapered octagon, blued-steel, 26" long w/6-groove button rifling (.805" AF). Ready to install. Hardware and sights not included. Note: 94 Angle Eject models will require an additional extractor/ejector cut.

ITEM # 882400 **\$114.95**

WINCHESTER 94 AE POST-64 BLACK SHADOW PISTOL GRIP STOCK & FOREND

Factory synthetic pistol grip stock features deluxe checkering, a Q.D. swivel stud and a Winchester logo recoil pad. Matching forend fits .44 Remington and .444 Marlin calibers. Purchase the stock and forend separately or in a set.

StockITEM # 886130 **\$31.45**
 ForendITEM # 886140 **\$13.15**
 Stock & Forend Set ITEM # 886150 **\$38.35**

WINCHESTER 94 POST-64 WINTUFF RIFLE FACTORY BROWN LAMINATED FOREND



Features deluxe checkering. New

ITEM # 886260 **\$20.95**

WINCHESTER 1894-1994 / 100TH YEAR COMMEMORATIVE GRIP CAP SET

Oval, black plastic w/logo. Measures 1.530" long x 1.235" wide. Set includes one grip cap and one attaching screw.



ITEM # 851630 **\$8.35**

WINCHESTER 92 .44 MAGNUM BARREL & MUZZLEBRAKE

This 16" blued-steel barrel includes a muzzlebrake attachment for an overall length of 18 1/4". Includes a brass front sight blade and a 3/8" rear sight dovetail cut (rear sight not included). Stamped Numrich Arms West Hurley, N.Y. Quantities are limited!

ITEM # 882210 **\$47.20**

WINCHESTER MODEL 94 ACCESSORIES

WINCHESTER 94 POST-64 FACTORY ROUNDED MAGAZINE PLUG

Late style, blued-steel. Fits all Post-64 top and angle eject series lever action rifles except the Big Bore. Magazine plug screw is also available, ITEM#274330.



ITEM # 930770 **\$6.25**

WINCHESTER 1894 100TH YEAR COMMEMORATIVE .30 W.C.F. BARREL



Fully machined, half octagon, 26" long. Features 6-groove rifling, matte blue finish, sight dovetails, magazine ring, undrilled tenon block and factory markings. Sights and hardware not included. Fits pre or post top eject models.

ITEM # 931430 **\$125.00**

WINCHESTER FRONT SIGHT BASE FOR MODEL 94

Factory original, blued-steel with 3/8" dovetail cut.



1.735" long, sweat-on style, cut for sight hood. Fits pre- and post-64 models.

ITEM # 294160 **\$4.00**

WINCHESTER ACCESSORIES

WINCHESTER MODEL 95 CALIBERS .35, .303, .30-06, .405 WINCHESTER & .30 ARMY (.30-40 KRAG)

| MFR# | ITEM# | DESCRIPTION | PRICE |
|-------|--------|---|---------|
| - | 237810 | Carrier, .30 Army (.30-40 Krag) . . . | \$56.25 |
| - | 237720 | Carrier, .30-06 | 56.25 |
| - | 237580 | Carrier, .303 Cal. | 56.25 |
| - | 236900 | Carrier, .35 Cal. | 56.25 |
| - | 237770 | Carrier, .405 Win | 56.25 |
| - | 237840 | Carrier Cam Lever, .30 Army (.30-40 Krag) | 44.95 |
| - | 237740 | Carrier Cam Lever, .30-06 | 44.95 |
| - | 237610 | Carrier Cam Lever, .303 Cal. | 44.95 |
| - | 236930 | Carrier Cam Lever, .35 Cal. | 44.95 |
| - | 237800 | Carrier Cam Lever, .405 Win | 44.95 |
| - | 237820 | Carrier Cradle, .30 Army (.30-40 Krag) | 50.65 |
| - | 237730 | Carrier Cradle, .30-06 | 50.65 |
| - | 237600 | Carrier Cradle, .303 Cal. | 50.65 |
| - | 236920 | Carrier Cradle, .35 Cal. | 50.65 |
| - | 237790 | Carrier Cradle, .405 Win | 50.65 |
| 3395 | 763520 | Carrier Cradle & Cam Lever Pin | 2.75 |
| 3895 | 763530 | Cartridge Stop, .303, .30-40 | 27.00 |
| 3995 | 763540 | Cartridge Stop, .35, .30-06, .30-30, .405 Cal. | 27.00 |
| - | 237850 | Ejector, .30 Army (.30-40 Krag) | 36.60 |
| - | 237750 | Ejector, .30-06 | 36.60 |
| - | 237620 | Ejector, .303 Cal. | 36.60 |
| - | 236940 | Ejector, .35 Cal. | 36.60 |
| - | 237760 | Ejector, .405 Win | 36.60 |
| 4795 | 234430 | Ejector Spring | 1.65 |
| 7195 | 234490 | Finger Lever Catch Plunger | 2.60 |
| 7295 | 234510 | Finger Lever Catch Spring | 1.65 |
| 7595 | 234540 | Finger Lever Link Pin | 2.60 |
| 6695 | 763550 | Finger Lever Lock | 46.00 |
| 6995 | 234480 | Finger Lever Lock Plunger Spring | 1.65 |
| 7395 | 234520 | Finger Lever Pin | 1.65 |
| - | 885090 | Firing Pin | 46.15 |
| 5995 | 234450 | Firing Pin Lock | 21.35 |
| 6095 | 234470 | Firing Pin Recoil Lock | 20.25 |
| 8195 | 234550 | Forend Stud | 6.20 |
| 8795 | 234570 | Hammer Screw | 2.30 |
| 9495 | 234580 | Links | 28.10 |
| 11795 | 763560 | Rear Band Screw, Carbine | 4.65 |
| 12395 | 763570 | Sear | 30.90 |
| 12495 | 234590 | Sear Pin | 1.65 |
| 12895 | 234610 | Trigger | 28.10 |

WINCHESTER MODEL 67 SINGLE SHOT .22 S, L, & LR

| MFR# | ITEM# | DESCRIPTION | PRICE |
|-------|--------|---|--------|
| - | 82550 | Front Sight | 11.90 |
| - | 395060 | Rear Sight W/Elevator, Replacement | 5.00 |
| 867 | 251080 | Buttplate | 14.55* |
| 967 | 148770 | Screw (Buttplate, 2 Req'd) | 2.70ea |
| 1067 | 220990 | Firing Pin | 29.25* |
| 1767 | 82740 | Trigger Guard With Two Screws, Replacement | 9.30 |
| 1867 | 231960 | Guard Bow Screw (2 Req'd) | 1.65ea |
| 2167 | 233850 | Extractor/Sear, .22 Cal. | 14.55 |
| 2267A | 233220 | Sear Spring, New Style | 4.10* |
| 2667 | 233950 | Trigger | 8.15* |
| 9069A | 701200 | Stock Stud Screw | 5.10 |
| 8875 | 254600 | Stock Stud | 4.30 |
| 9269A | 233890 | Escutcheon | 2.85 |

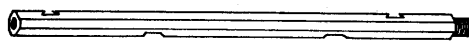
WINCHESTER MODEL 20 .410 SINGLE BARREL

| ITEM# | DESCRIPTION | PRICE |
|--------|---|--------|
| 299010 | Buttstock Bolt, Model 20 | \$8.95 |
| 299020 | Barrel Trunnion, Model 20 | 16.85 |
| 299030 | Ejector Spring, Model 20 | 2.35 |
| 299040 | Hammer, Model 20 | 21.35 |
| 299050 | Hammer Spring Guide Rod, Model 20 | 5.60* |
| 299060 | Locking Bolt, Model 20 | 16.35 |
| 299070 | Trigger, Model 20 | 11.25 |

WINCHESTER MODEL 41 .410 GA. BOLT ACTION

| PART# | ITEM# | DESCRIPTION | PRICE |
|-------|--------|-------------------------------------|-------|
| 441 | 299120 | Bolt Head, Model 41 | 27.65 |
| 1541 | 299150 | Firing Pin, Model 41 | 16.85 |
| 1841 | 299160 | Firing Pin Head, Model 41 | 8.45 |
| 2541 | 299210 | Sear, Model 41 | 16.85 |
| 2641 | 299230 | Sear Spring, Model 41 | 2.35 |

WINCHESTER 90-06 REPLACEMENT .22 CAL. OCTAGON BARRELS



Fully finished, blued-steel, .750" A.F., 24" long. Fits models 1890, 1906 and 62A. Sights not included.

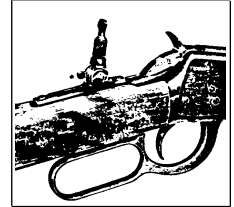
.22 S, L, LR BarrelITEM#720930 **\$73.45**
.22 Short BarrelITEM#729380 **\$73.45**

WINCHESTER RIFLE STOCK BLANK

Turned and contoured plain hardwood blank. 32" long x 1-1/2" thick with cheek-piece and pistol grip. Originally manufactured by Winchester for the model 670 bolt action rifle. ITEM#295130 **\$21.35**

SCREWS FOR WINCHESTER TANG SIGHTS

Blued-steel replacements for Lyman or Marbles tang sights requiring longer than standard length screws.



Front screw - Fits Models 1890, 1892, 1894, 1873, 53, 55 and High & Low Wall Single Shot. ITEM#296250 **\$3.35ea**

Rear screw - Will fit Models 1894, 1873, 1892, 53, 55 and High & Low Wall Single Shot. ITEM#296270 **\$3.35ea**

Rear screw - Fits Models 1890 and 1906. ITEM#296260 **\$3.35ea**

LYMAN NO. 2 RIFLE TANG SIGHT

Manufactured by Lyman to the same specifications they used a century ago on their classic original 1878 sight. Blued-finish, all-steel construction with height index marks on the aperture post. .093" quick sight hunting aperture and .040" large disk target aperture.



Includes replacement tang screw and front tang screw. Fits Winchester models 1885, 1886, 1890, 62A and 94. Will also fit Rossi M92 and M62. ITEM#296850 **\$87.10**

WINCHESTER CRESCENT STEEL BUTTPLATE



Made in the U.S.A. from investment cast 4140 steel. Measures 1 1/2" long x

7/8" wide. Fits models 92, 94, 73, 86, 95 & High/Low Wall. Supplied as cast, in the white, with sprue and attaching screws. Final fitting, polish and finish is required.

ITEM # 883930 **\$25.20**

WINCHESTER 52 / 75 RIFLE 5 ROUND .22 LR MAGAZINE



Blued-steel replacement. Fits bolt action models 52, 56, 57, 69, 69A & 75. ITEM#294390 **\$15.05**

MAGAZINE TUBES FOR WINCHESTER AND MARLIN LEVER ACTION RIFLES

Blued-steel replacements. Drilled for magazine plug screw. Choose from the following list for Winchester Models 94, 92, 53, 73, 64 and 55; Sears M-54; and Marlin Models 93, 94, 89 and 36. Fits calibers 30-30, .44, .38/55, .38/40 and .357.

12" longITEM#295470 **\$9.40** | 23-5/8" longITEM#295580 **\$17.70**
13-1/4" longITEM#295530 **\$9.40** | 25-1/4" longITEM#295600 **\$17.70**
20" longITEM#295540 **\$11.85**

Choose from the following list for Winchester 92 and 53; and Marlin 94 and 89. Fits .25/20, .32/20 and .218 Bee calibers.

9-5/8". Notched for band screw.ITEM#296080 **\$9.40**
13-1/2". Blank tube, no cuts, in the white, steel.ITEM#296110 **\$11.85**
10-3/8". Original, blued-steel with notchITEM#296140 **\$14.80**
23-1/2". Notched for band screw, blued-steel replacement.ITEM#296170 **\$17.70**
23-1/2". Plain, no notch, blued-steel replacement.ITEM#296200 **\$16.00**

For Win. 71 & 86, Order: - 26". Blued-steel replacement.ITEM#367990 **\$21.35**

WINCHESTER ACCESSORIES

WINCHESTER 88 & 100 5 ROUND .243 / .308 MAGAZINES

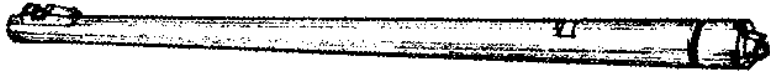


Blued-steel replacements.

Model 100 Magazine. ITEM#198720-01 **\$55.15**
Model 88 Magazine. ITEM#198720-02 **\$55.15**

WINCHESTER 9422 XTR CLASSIC RIFLE BARRELS

New, factory original 22" blued-steel barrels with front



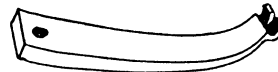
sight ramp for the .22 caliber lever action 9422 and 9422M XTR rifles (sights not included).
Model 9422 (.22 S, L, LR) ITEM#704600 **\$70.25**
Model 9422M (.22 Win Magnum) ITEM#704610 **\$75.65**

.22 LR INNER MAGAZINE TUBE FOR WINCHESTER MODEL 190

New brass replacement. Also fits standard front sight Models 150, 250, 270 and 290.
ITEM#250410 **\$16.55**



MAINSRING FOR WINCHESTER MODELS 53, 73, 76, 92 AND PRE 64 MODEL 94



Blued-steel replacement. Can be fitted to Models 90-06 and 1886.
ITEM#539540 **\$18.00**

STOCK AND FORENDS FOR WINCHESTER

| ITEM# | DESCRIPTION | PRICE |
|--------------------------------------|--|-------|
| WINCHESTER MODEL 250 | | |
| 231140 | Forend, Plain | 13.50 |
| 586470 | Forend, Model 250, Checkered | 16.85 |
| 590310 | Forend, Model 250, Uncheckered (Lever Action Only) | 13.50 |
| WINCHESTER MODEL 1500W-1500FC | | |
| 586610 | Forend, Model 1500Xtr, Checkered Walnut | 28.10 |
| WINCHESTER MODEL 255 | | |
| 231140 | Forend, Plain | 13.50 |
| WINCHESTER MODEL 290 | | |
| 231140 | Forend, Plain | 13.50 |
| 586490 | Forend, Model 290, Checkered | 16.85 |

| ITEM# | DESCRIPTION | PRICE |
|---------------------------------|--|--------|
| WINCHESTER MODEL 42 | | |
| 586470 | Action Slide Handle (Forend) - Used, Good Condition | 64.40 |
| WINCHESTER MODEL 94-22 | | |
| 587590 | Stock With Buttplate, Walnut - Refinished | 37.05 |
| 587600 | Stock With Buttplate, Walnut - Cut For Medallion On The Side, Refinished | 32.10 |
| WINCHESTER MODEL 94-22 | | |
| 586580 | Forend, Refinished | 19.60 |
| WINCHESTER MODEL SUPER X | | |
| 586320 | Forend, Plain Walnut | 37.45* |
| 586220 | Stock, Checkered Walnut - Refinished With White Line Spacer & Buttpad | 59.00 |

WINCHESTER FACTORY RED RIFLE PAD

Smooth pad with Winchester logo. Includes black plastic spacer. Measures 4.9" long x 1.6" wide x .400" thick.

ITEM#271290 **\$5.95**



WINCHESTER BUTTPLATE WITH LOGO

Black hard-rubber. .640" wide x 5.175" long. 3.425" between screw holes. Final fitting may be required. Original Winchester manufacture.

ITEM#235880 **\$13.95**



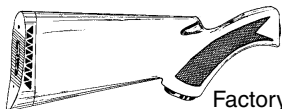
ORIGINAL WINCHESTER VENTED RECOIL PAD

Smooth-finished with Winchester logo. 4.7" long x 1.7" wide x .85" thick.

ITEM#271320 **\$6.20**



WINCHESTER SUPER X MODEL 1 12 GA. SYNTHETIC BUTTSTOCK



Factory new black checkered buttstock includes grip cap and black vented logo recoil pad.

ITEM#730860 **\$37.80**

WINCHESTER 100 CUT-OFF RIFLE BARRELS



Factory original, blued-steel, excellent condition. Cut just ahead of the chamber leaving no threads. Includes front sight ramp, rear sight dovetail cut and gas block. measures approximately 20 1/2" long x .970" O.D. at the cut-off end.

.308 Winchester Barrel
..... ITEM#595480-01 **\$16.05**
.284 Winchester Barrel
..... ITEM#146280 **\$14.05**

WINCHESTER TAKEDOWN MAGAZINE TUBE PARTS FOR MODELS 92 AND 94

Factory original blue steel parts.
Magazine lever screw (small caliber only)
ITEM#319610 **\$1.95**
Magazine lever plunger ITEM#319640 **\$1.70**
Magazine lever plunger spring
ITEM#319670 **\$1.25**

WINCHESTER 95 LEVER ACTION RIFLE FIRING PIN



Blued-steel replacement.
ITEM # 885090 **\$46.15**

FOREND BANDS AND QD SWIVELS

New band with quick-detach base and band screw to fit Mossberg 472 & 479 rifles. Can be fitted to Winchester models 92 & 94 and Marlin 94, 89 & 336 Carbine Series. Blued-steel.

ITEM#560420 **\$8.35**

Band with Buttstock Swivel Screw Stud.
Blued-Steel. ITEM#560430 **\$11.50**

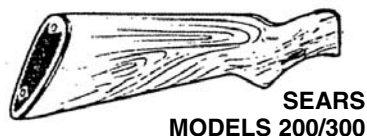
Uncle Mike's 1 1/4" Quick-Detach Swivel for Use with Base. Blued-Steel.
ITEM#538020 **\$10.90/pr**

Uncle Mike's 1" Quick-Detach Swivel for Use with Stud. Blued-Steel.
ITEM#538010 **\$ 10.90/pr**

WINCHESTER ACCESSORIES

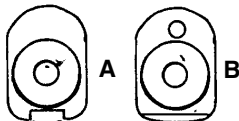
SEARS BRAND (WINCHESTER) STOCKS AND FORENDS

Below is a list of Winchester factory stocks and forends, originally equipped on firearms sold under the Sears, Roebuck & Co. and Ted Williams store brand names. Most are new, however, some may include slight shop or storage wear. Available for both rifles and shotguns in various styles.



SEARS
MODELS 200/300

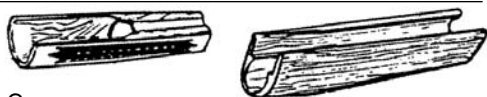
FRONT OF STOCK WHERE
IT JOINS RECEIVER.



SHOTGUN STOCKS

- Sears 200 / 300 - 12 & 20 Gauge - Plain Walnut Stained Hardwood w/Recoil Pad - Style AITEM#590010 **\$39.35**
- Sears 200 / 300 - 12 & 20 Gauge - Plain Walnut Stained Hardwood w/Recoil Pad - Style BITEM#590000 **\$33.75**
- Sears 200 / 300 - 12 & 20 Gauge - Checkered Walnut w/Recoil Pad - Style BITEM#801090 **\$39.35**
- Sears 200 / 300 - 12 & 20 Gauge - Plain Walnut Stained Hardwood w/Buttplate - Style BITEM#590050 **\$33.75**

SHOTGUN FORENDS



- Sears 200 - 12 & 20 Gauge - Plain Walnut Stained Hardwood - 8 1/2" OAL - (Fits Winchester 1200 & 1300 XTR)ITEM#590330 **\$18.60**
- Sears 200 - 12 & 20 gauge - Plain Walnut Stained Hardwood - 10" OAL - (Fits Winchester 1200 & 1300 XTR)ITEM#842700 **\$18.60**
- Sears 200 - 12 & 20 Gauge - Checkered Walnut - (Fits Winchester 1200 & 1300 XTR) . .ITEM#590340 **\$28.10**
- Sears 300 - 12 Gauge - Plain Walnut Stained Hardwood - (Fits Winchester 1400)ITEM#590370 **\$18.60**
- Sears 300 - 20 Gauge - Plain Walnut Stained Hardwood (Fits Winchester 1400)ITEM#590380 **\$18.60**

- Winchester 1500 XTR - 20 Gauge - Checkered WalnutITEM#842710 **\$17.70**



SEARS 3T / 4T /
5T, 53 / 53A / 73
ALSO WINCHESTER 70A, 770 & 670

RIFLE STOCKS

- Sears 5T - .22 Caliber - Plain Walnut Stained Hardwood w/Buttplate . . .ITEM#590240 **\$14.55**
- Sears 3T / 4T - .22 Caliber - Plain Walnut Stained Hardware w/Buttplate . . .ITEM#590250 **\$14.55**
- Sears 3T / 4T - .22 Caliber - Checkered Walnut w/Grip Cap & Buttplate . . .ITEM#590260 **\$22.50**
- Sears 53A / 73 - Long Action - Blind Box - Plain Walnut Stained Hardwood - Monte Carlo w/Buttplate (Fits Winchester 70A, 770 and 670)ITEM#590270 **\$50.60**
- Sears 53 - Long Action - Hinged Floorplate - Checkered Walnut Stained Hardwood - Monte Carlo w/Buttplate - (Will Not Fit Winchester 70)ITEM#590290 **\$56.25**

RIFLE FORENDS



- Sears 5T - .22 Caliber - Plain Walnut Stained Hardwood (Fits Winchester 270 & 275)ITEM#590300 **\$13.50**
- Sears 3T / 4T - .22 Caliber - Plain Walnut Stained Hardwood (Fits Winchester 150, 190, 250, 255 & 290)ITEM#590310 **\$13.50**
- Sears 54 - Walnut - 6 3/4" Long (Fits Winchester 94)ITEM#590320 **\$28.10**

SEMI-FINISHED BUTTSTOCKS & FORENDS FOR EARLY WINCHESTER LEVER ACTIONS

Straight-grained American black walnut buttstock and forend replacements closely match the original Winchester wood, providing your vintage lever action with an authentic look and feel. Fully-contoured in all areas to within approximately 1/16" of finish size, then machine sanded to remove all production marks. Final fit, finish and stain required (hardware not included).



BUTTSTOCKS (INLETTED TO ACCEPT ORIGINAL FACTORY BUTTPLATES)

- 1873 Rifle - Straight Grip - Crescent ButtplateITEM#764010 \$68.25
- 1873 Carbine - Straight Grip - Carbine ButtplateITEM#764020 \$68.25
- 1876 Rifle - Straight Grip - Crescent ButtplateITEM#764030 \$68.25
- 1885 Low Wall Rifle - Straight Grip - Crescent ButtplateITEM#764040 \$68.25
- 1885 High Wall Rifle - Straight Grip - Crescent ButtplateITEM#764050 \$68.25
- 1886 Rifle (serial # below 94,000) - Straight Grip - Crescent Buttplate . . .ITEM#764060 \$68.25
- 1886 Rifle (serial # above 94,000) - Straight Grip - Crescent Buttplate . .ITEM#764070 \$68.25
- 1887 Shotgun - Pistol Grip - Shotgun Style ButtplateITEM#764080 \$78.75
- 1892/1894 Rifles - Straight Grip - Crescent ButtplateITEM#764090 \$68.25
- 1892/1894 Carbine - Straight Grip - Carbine ButtplateITEM#764100 \$68.25
- 1895 Rifle - Straight Grip - Crescent ButtplateITEM#764110 \$68.25
- 71 Rifle (3 7/8" upper tang) - Pistol Grip - Shotgun Style ButtplateITEM#764120 \$78.75
- 71 Rifle (2 7/8" upper tang) - Pistol Grip - Shotgun Style ButtplateITEM#764130 \$78.75

FORENDS

- 1866/1873 Rifles - Octagon - Large CaliberITEM#764140 \$47.25
- 1873 Rifle - Octagon - Small CaliberITEM#764150 \$47.25
- 1866/1873 Rifles - Round - Large CaliberITEM#764160 \$47.25
- 1873 Rifle - Round - Small CaliberITEM#764170 \$47.25
- 1866/1873 Carbine - Round - Large CaliberITEM#764180 \$47.25
- 1873 Carbine - Round - Small CaliberITEM#764190 \$47.25
- 1876 Rifle - Octagon - All CalibersITEM#764200 \$47.25
- 1876 Rifle - Round - All CalibersITEM#764210 \$47.25

- 1885 Low Wall Rifle - #1 Octagon - All CalibersITEM#764220 \$47.25
- 1885 Low Wall Rifle - #2 Octagon - All CalibersITEM#764230 \$47.25
- 1885 High Wall Rifle - #3 Octagon - All CalibersITEM#764240 \$47.25
- 1885 High Wall Rifle - #4 Octagon - All CalibersITEM#764250 \$47.25
- 1886 Rifle - Octagon - All CalibersITEM#764260 \$47.25
- 1886 Rifle (serial # below 94,000) - Round - All CalibersITEM#764270 \$47.25
- 1886 Rifle (serial # above 94,000) - Round - All CalibersITEM#764280 \$47.25
- 1886 Carbine - Round - All CalibersITEM#764290 \$47.25
- 1892/1894 Rifles - Octagon - Large CaliberITEM#764300 \$47.25
- 1892 Rifle - Octagon - Small CaliberITEM#764310 \$47.25
- 1892/1894 Rifles - Round - Large CaliberITEM#764320 \$47.25
- 1892 Rifle - Round - Small CaliberITEM#764330 \$47.25
- 1892/1894 Carbine - Round - Large CaliberITEM#764340 \$47.25
- 1892 Carbine - Round - Small CaliberITEM#764350 \$47.25
- 1894 Commemorative Post 64 - Octagon - All CalibersITEM#764360 \$47.25
- 1894 Carbine Post 64 - Round - All CalibersITEM#764370 \$47.25
- 1895 Rifle - Round - Small CaliberITEM#764380 \$47.25
- 1895 Rifle - Round - Large CaliberITEM#764390 \$47.25
- 1895 Carbine - w/o Grooves - Round - All CalibersITEM#764400 \$47.25
- 1895 Carbine - w/Grooves - Round - All CalibersITEM#764410 \$47.25
- 1895 Musket - Round - All CalibersITEM#764420 \$47.25
- 71 Rifle - Round - All CalibersITEM#764430 \$47.25
- 1894 Cowboy Conversion Post 64 - Round - Long Style - All Calibers . .ITEM#764440 \$47.25
- Ebony Inlay - Fits 1885 and 1895 Schnabel Tip ForendsITEM#764450 \$5.25

WINCHESTER ACCESSORIES

WINCHESTER PROOF MARK HAND STAMP



Hardened steel stamp for use on wood, metal or leather surfaces. Features the letters P and W in an oval. Commonly found on the breech end of most Winchester firearm barrels including models 12 and 97 trench and riot guns. Use for restoration purposes only. Manufactured by Numrich Gun Parts Corporation.

ITEM # 850750 **\$68.20**

WINCHESTER CHECKERED STEEL SHOTGUN STYLE BUTTPLATE



Made in the U.S.A. from investment cast 4140 steel. Supplied as cast, in the white, with sprue and attaching screws. Fits models 97, 64, 70 Pre-64, 71, 86, 95, 1887 & 1901. Final fitting and finish is required.

ITEM # 247970 **\$25.20**

WINCHESTER 94-22 CLASSIC WALNUT PISTOL GRIP STOCK & FOREND



This new, factory original wood fits the Winchester 94-22 Classic lever action rifle. The plain pistol grip stock includes a black plastic sporter grip cap and a high-polish, crescent steel buttplate. The matching Saddle Ring forend measures 9 1/4" long. Purchase the stock and forend separately or in a set.

Stock
ITEM # 886100 **\$41.95**

Forend
ITEM # 886110 **\$20.95**

Stock & Forend Set
ITEM # 886120 **\$52.45**

ALUMINUM FOREND PIVOT PLATE FOR SAVAGE / WINCHESTER FIREARMS



Durable replacement pivot plate with black anodized finish. Attaching screws not included. May require minor final fitting. Fits Winchester models 37A, 340 and 840 and Savage models 24, 94, 219, 220, 240, 242, 940, 947 and 9478.

ITEM # 852270 **\$13.60**

WINCHESTER 88 WALNUT STOCK



Features a low luster lacquer finish and buttplate. Fits models with a rounded, non-scalloped recoil block.

ITEM # 932130 **\$91.90**

WINCHESTER 67 / 68 / 69 WEAVER ALL-STEEL ONE-PIECE MOUNT BASE



Blued-steel base with screws in the original box. Also fits models 57 and 60.

ITEM # 953710 **\$6.25**

WINCHESTER 64 / 64A RIFLE WALNUT PISTOL GRIP STOCK



This new, factory original stock fits Pre-64 and Post-64 Winchester lever action rifle models 64 and 64A. The plain walnut stock includes a pistol grip, a pre-drilled hole for a Q.D. swivel stud and a black plastic Winchester logo buttplate. Quantities are limited!

ITEM # 886320 **\$52.45**

WINCHESTER 1892 / 1894 FOREND TIPS

Blued-steel replacements. Choose from round or octagon in the following calibers: .30-30, .38-40, .38-55 and .44-40.



Round Barrel Forend Tip
ITEM # 882920 **\$20.95**

Octagon Barrel Forend Tip
ITEM # 882930 **\$20.95**

WINCHESTER 1 1/4" STOCK SWIVEL SET

Blued-steel replacement. Fits models 52C, 69A, 75 and 12/97 trench guns after serial #912,000 and serial #915,000 respectively.



ITEM#931850 **\$15.70**

WINCHESTER 88 / 100 WEAVER ALL-STEEL ONE-PIECE MOUNT BASE

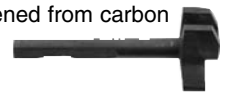


Blued-steel base with screws in the original box.

ITEM #953720 **\$6.25**

WINCHESTER 1892 REPLACEMENT EJECTOR

Machined and hardened from carbon steel. Requires final fitting to large and small caliber bolts.



ITEM#953450 **\$31.45**

BODY - MATTE BLUE - ALL CALIBERS EXCEPT .338 WIN MAG

The BOSS (Ballistic Optimizing Shooting System) is an accuracy enhancing, anti-vibration and recoil reducing system that includes an adjustable muzzlebrake/weight. Choose from the following factory new steel parts.



Body - Matte Blue - All Calibers Except .338 Win Mag

ITEM#930020 **\$31.45**